

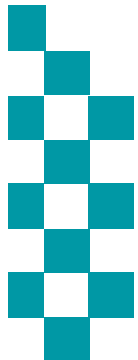
# Corporate Performance & Scrutiny Group

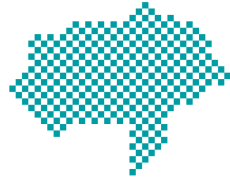


Meeting: Tuesday 24<sup>th</sup> November

Reporting Period: 1<sup>st</sup> Apr 15 → 31<sup>st</sup> Oct 15

NB: Statistics remain provisional and subject to change





# INTRODUCTION



Reporting Period: 01/04/2015 → 31/10/2015

## Contents:

- The Results: Current Performance levels
  1. Headline overview statistics
  2. Crimes & ASB statistics (including stats by District council area)
  3. Road Traffic Collision casualties
- The People: HR/headcount information
- Finance: Included as an Appendix

## Recommendations:

- The Group notes the contents and current position

## Actions arising from this meeting in response to scrutiny:

- 

## Glossary of Terms

- Please final page in document

## Time Periods

- Unless indicated otherwise statistics are presented by financial year

## Performance Monitoring/Management and Operational Priorities

- At a strategic level this meeting (The Corporate Performance & Scrutiny Group) and Executive Board consider performance in the broader context of financial and people data and consider progress against the delivery of the Police and Crime Plan
- The force runs its Tactical Tasking & Co-ordination Group (TTCG) meeting on a 3 month cycle rather than monthly. This meeting looks predicted operational matters some 3 to 6 months in the future. Local TTCG meetings also run quarterly
- The Performance Steering Group now sits with the Operational Delivery Board meeting which also monitors progress against business plans and activity around HMIC inspections

# EXECUTIVE SUMMARY

## October 2015 Dashboard

Total Crime Recorded

Victim Based Crimes recorded

Anti-Social Behaviour Incidents Reported

Killed Seriously Injured Casualties

% Victims Satisfied

% public who believe NYP/Councils deal w ith

% public who are Confident in NYP



2015/16	22280	2015/16	19984	2015/16	19175	2015	307	2015/16	82.4%	2015/16	66.5%	2015/16	82.3%
v 14/15	7.7%	v 14/15	9.6%	v 14/15	-6.2%	v 14/15	-24.2%	v 14/15	-4.7%	v 14/15	-3.8%	v 14/15	3.7%
v 13/14	7.7%	v 13/14	7.6%	v 13/14	-5.6%	v 13/14	-23.4%	v 13/14	-1.2%	v 13/14	0.7%	v 13/14	4.4%

### Commentary on current position

- **Crime:** NYP has the lowest crime per 1000 population in England.
- The main exceptions continue to be in Criminal Damage & Violence and these trends appear to be reflected nationally Previous reports (<http://www.northyorkshire-pcc.gov.uk/taking-action/scrutiny-of-north-yorkshire-police/performance-reports/>) contain more detailed commentary on these trends.
- Other trends of note are Burglary Dwelling – predominately linked to Harrogate and burglary non dwelling where there have been a number of break in and thefts at Farms. Arrests have been made and investigations are ongoing.
- Ongoing major crime investigation including murder & disappearance of Claudia Lawrence
- **ASB** is down by 6% on last year. Repeat victimisation linked to ongoing neighbour disputes – housing associations aware and providing mediation.
- **Killed Seriously Injured (KSI) casualties:** shows a reduction against previous years
- **Satisfaction:** Satisfaction remains high with more than 8 in 10 victims satisfied with service. Trends for satisfaction of victims of Violence and Burglary are stable. A negative trend for victims of auto crime remains under scrutiny although latest data indicates this drop has stabilised. This drop correlates to changes in attendance at scene rates under the THRIVE model (NB more than 2000 officer hours have been freed up since April 2014 through non attendance) and analysis of feedback shows dissatisfaction is where we have not “managed the expectations” of the caller. Advice/guidance has been disseminated in the Force Control Room .
- **Public Confidence:** in police remains high based on latest national dataset.
- In October ACC Kennedy held Performance Conferences for Hambleton, Richmondshire & Craven and the Force Control Room in October. The areas of focus include quality of service, community engagement and feedback, partnerships, deployment and tasking of resources.

NOT PROTECTIVELY MARKED

## CRIME / ASB / PSW v PREVIOUS YEARS VOLUME CHANGE

RECORDED CRIME STATISTICS		2013/14	2014/15	2015/16	Diff 15/16 v 14/15		Diff 15/16 v 13/14		Trend
Victim Based	Arson & Criminal Damage	3380	3014	3496	482	16.0%	116	3.4%	
	Burglary: Burglary Dwelling	923	853	928	75	8.8%	5	0.5%	
	Burglary: Burglary Non Dwelling	1618	1484	1605	121	8.2%	-13	-0.8%	
	Robbery	67	81	103	22	27.2%	36	53.7%	
	Sexual Offences: Other	275	427	470	43	10.1%	195	70.9%	
	Sexual Offences: Rape	128	179	213	34	19.0%	85	66.4%	
	Theft: All Other Theft	3437	3125	2962	-163	-5.2%	-475	-13.8%	
	Theft: Bicycle Theft	947	837	904	67	8.0%	-43	-4.5%	
	Theft: Shoplifting	2301	2323	2440	117	5.0%	139	6.0%	
	Theft: Theft From Person	305	326	290	-36	-11.0%	-15	-4.9%	
	Vehicle Offences	1573	1302	1322	20	1.5%	-251	-16.0%	
	Violence: Violence With Injury	2292	2341	2787	446	19.1%	495	21.6%	
	Violence: Violence Without Injury	1319	1939	2464	525	27.1%	1145	86.8%	
	<b>Total</b>	<b>18565</b>	<b>18231</b>	<b>19984</b>	<b>1753</b>	<b>9.6%</b>	<b>1419</b>	<b>7.6%</b>	
Crimes Against Society	Drugs: Possession Of Drugs	913	1058	929	-129	-12.2%	16	1.8%	
	Drugs: Trafficking Of Drugs	140	170	163	-7	-4.1%	23	16.4%	
	Misc Crimes Against Society	234	329	295	-34	-10.3%	61	26.1%	
	Possession Of Weapons	103	147	96	-51	-34.7%	-7	-6.8%	
	Public Order Offences	736	757	813	56	7.4%	77	10.5%	
	<b>Total</b>	<b>2126</b>	<b>2461</b>	<b>2296</b>	<b>-165</b>	<b>-6.7%</b>	<b>170</b>	<b>8.0%</b>	
<b>Total</b>	<b>20691</b>	<b>20692</b>	<b>22280</b>	<b>1588</b>	<b>7.7%</b>	<b>1589</b>	<b>7.7%</b>		

### Slide Summary

- This slide shows **volume change** across the last 3 years.
- **Victim Based Crime** is up on previous years by 8%.
- Despite this rise NYP remains having the lowest crime per 1000 population in England

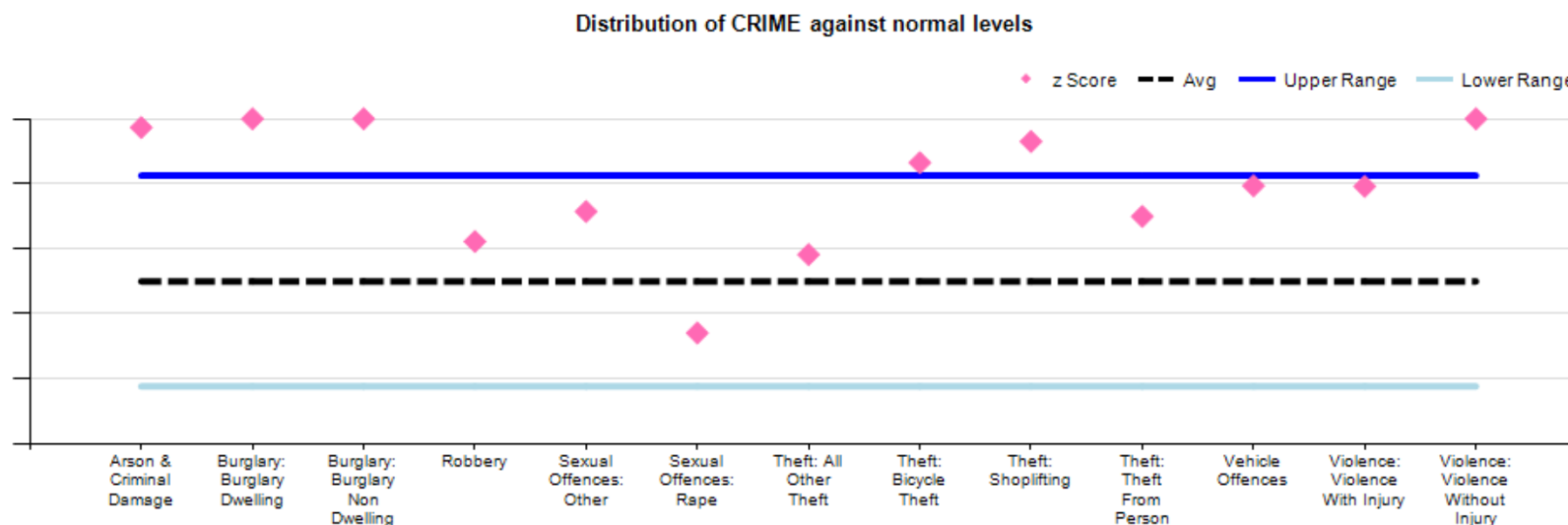
NON CRIME STATISTICS		2013/14	2014/15	2015/16	Diff 15/16 v 14/15		Diff 15/16 v 13/14		Trend
ASB	<b>Total</b>	<b>20323</b>	<b>20432</b>	<b>19175</b>	<b>-1257</b>	<b>-6.2%</b>	<b>-1148</b>	<b>-5.6%</b>	
PSW	<b>Total</b>	<b>44827</b>	<b>45352</b>	<b>46188</b>	<b>836</b>	<b>1.8%</b>	<b>1361</b>	<b>3.0%</b>	

- **ASB** is down on the previous year by 6%
- **PSW** volume trend is still rising year on year, and is up by 2% on last year.

NOT PROTECTIVELY MARKED

## EXCEPTION BANDING: VICTIM BASED CRIME

◆ Represents Crime levels recorded in the last month, Data is normalised to allow crime groups with different volumes (e.g. robbery and criminal damage) to be presented on same graph. Crime levels can be described as normal if they fall between the blue lines with movement in this range likely to be random fluctuations.



### Slide Summary

- Although the previous slide details some volume changes in crime levels over the current financial year to date many of the crime levels remain within tolerance and not part of any identified long term trends. However we can summarise that October was a month of high demand
- The long term exceptions remain **Violence & Criminal Damage** - Both these crime groups remain in exception meaning the monthly trends are higher than expected. These trends are reflected nationally and the causes are complex. These have been discussed in detail in previous reports. Current exceptions of note have been:
  - **Burglary Dwelling** - This is linked to some 107 offences committed within the Harrogate command area in September and October. These offences are spread across the District. Predominantly forced entry with peak times during the day. Cash, Foreign currency, small electrical items, jewellery, large TV's and food items have been taken. Some arrests made and investigations are ongoing. Proactive operations are ongoing which includes the use of the force's Roads Crime Teams (RCT) and exploiting ANPR technology.
  - **Burglary Non Dwelling** - Levels in York have been high across the last two months (mix of sheds, garages & commercial properties targeted across the city), elsewhere appears to be more of a 'spike' in October with two series of note: allotments on Bawtry Road in Selby and farms at Ribston (Harrogate).
  - **Bicycle Theft** - has been an issue almost solely for York over the last three months. Crime has focussed on two categories 1) high value cycles and 2) opportunistic theft. Some of these offences have been linked to several youths local to York. There have been arrests but minimal amounts of property recovered. The local SNT have been working in recognised hot spot areas, undertaking property marking events (#whatistdotpeen) alongside Op Joypad proactive security checks. Reassurance patrols and high visibility patrols continue. Op Ramble specifically focuses on cycle theft and garage burglaries in York
  - **Shop Theft** - Appears to be a single spike rather than a long term trend. Linked to a higher than usual number in Scarborough - theft from supermarkets - often for alcohol.

## NYP'S TACTICAL RESPONSE

	Burglary Dwelling	Burglary Non Dwelling	Criminal Damage	Violence W/Injury	Vio W/out Injury	Cycle Theft
Craven Hamble Richm H'gate	<ul style="list-style-type: none"> <li>•Op RAM - X Border working with neighbouring forces</li> <li>•Use of ANPR &amp; Roads Crime Team</li> <li>•Outcome: Arrests made and investigations on going</li> </ul>	<ul style="list-style-type: none"> <li>•X border working with neighbouring forces</li> <li>•Targeted patrols in rural areas</li> <li>•Op SHROUD running in Hamb Rich to coordinate local response</li> </ul>	<ul style="list-style-type: none"> <li>•Sporadic offending but some series e.g. 27 tyre slashings in Colburn</li> <li>•Local tactics in place</li> </ul>	<ul style="list-style-type: none"> <li>•Forcewide No geographical trends or hotspots</li> <li>• increase in domestic related crimes being recorded</li> <li>•Successful operations within NTE may have displaced violence.</li> </ul>	<ul style="list-style-type: none"> <li>•Increase in Police recording of Harassment offences</li> <li>•Including those crimes over social media.</li> </ul>	<ul style="list-style-type: none"> <li>•Not a current issue however Crime prevention &amp; education work alongside Community Safety Partnerships continues</li> </ul>
Scarboro Ryedale	<ul style="list-style-type: none"> <li>•Op SHUDDER . Targets x border criminality for burglary &amp; theft in rural areas. Support from specialist units. Tactics include proactive stop checks .</li> <li>•Outcome: Arrests made including one person charged with 13 offences &amp; remanded</li> </ul>		<ul style="list-style-type: none"> <li>•Op AMBIENCE was in place following spike in Castle &amp; North Bay. Multi- Agency response.</li> <li>•Outcomes: Alcohol &amp; tobacco seizures. Drug possession offences recorded but overall a Reduction in Young persons drinking / causing ASB</li> </ul>	<ul style="list-style-type: none"> <li>•improved recording standards and victim confidence recognised nationally as driver</li> <li>•Bid in Scar/Rye with OPCC for an outreach worker to deal with low/standard risk Domestic Abuse.</li> </ul>		<ul style="list-style-type: none"> <li>•Preventative work at Dalby Forest which has been a previous hotspot</li> </ul>
York Selby	<ul style="list-style-type: none"> <li>•Op RAMBLE – local response to burglary hotspots. Targeting of local offenders. Stop/Search. Proactive Patrols.</li> <li>•Outcome: Arrests of key nominal has seen crime drop</li> <li>•Recent spate of burglaries where cars are stolen (2 in 1s) are subject of ongoing intelligence work.</li> </ul>		<ul style="list-style-type: none"> <li>•Problem solving plans for Selby hotspots. Targeted patrols &amp; partnership working with council. Dispersal powers used</li> <li>•Outcome: CCTV installed by Council at Community Centre</li> </ul>	<ul style="list-style-type: none"> <li>•Focussed work with Repeat victims of domestic abuse for positive action in Selby</li> </ul>		<ul style="list-style-type: none"> <li>•Op JoyPad</li> <li>•Reassurance &amp; high-vis patrols at key times</li> <li>•Property marking</li> <li>•Outcome: Arrests</li> </ul>

## VICTIM BASED CRIME BY DISTRICT v PREVIOUS YEARS

NO OF CRIMES	2015/16	
<b>HAMBLETON</b>	<b>1542</b>	
CHANGE 15/16 v 14/15	136	9.7%
CHANGE 15/16 v 13/14	18	1.2%

NO OF CRIMES	2015/16	
<b>RICHMONDSHIRE</b>	<b>787</b>	
CHANGE 15/16 v 14/15	-44	-5.3%
CHANGE 15/16 v 13/14	-123	-13.5%

NO OF CRIMES	2015/16	
<b>RYEDALE</b>	<b>856</b>	
CHANGE 15/16 v 14/15	46	5.7%
CHANGE 15/16 v 13/14	56	7.0%

NO OF CRIMES	2015/16	
<b>SCARBOROUGH</b>	<b>4135</b>	
CHANGE 15/16 v 14/15	385	10.3%
CHANGE 15/16 v 13/14	707	20.6%

NO OF CRIMES	2015/16	
<b>HARROGATE</b>	<b>3309</b>	
CHANGE 15/16 v 14/15	203	6.5%
CHANGE 15/16 v 13/14	179	5.7%

NO OF CRIMES	2015/16	
<b>CRAVEN</b>	<b>1037</b>	
CHANGE 15/16 v 14/15	134	14.8%
CHANGE 15/16 v 13/14	-28	-2.6%

NO OF CRIMES	2015/16	
<b>YORK</b>	<b>6427</b>	
CHANGE 15/16 v 14/15	706	12.3%
CHANGE 15/16 v 13/14	348	5.7%

NO OF CRIMES	2015/16	
<b>SELBY</b>	<b>1866</b>	
CHANGE 15/16 v 14/15	175	10.3%
CHANGE 15/16 v 13/14	240	14.8%

- The main exceptions are:
  - Criminal Damage and Violence. As described in previous reports are long term trends and account for the majority of the volume rises.
  - Burglary Dwelling in Harrogate over last two months
  - Burglary Non Dwelling spikes Harrogate & Selby
  - Cycle Theft in York
  - Shop Theft spike in October at force level but linked to Scarborough

The above is a presentation of year on year statistics. For latest local data displayed on a map for your area go to [www.police.uk](http://www.police.uk) and enter your postcode

## NOTABLE INVESTIGATIONS

- **Op Hurley** – now complete – defendant found guilty of manslaughter & sentenced to 6 yrs 9 mths.
- **Op Neutron** – robbery / aggravated burglary in Knaresborough
- **Op Overcast** – murder in York.
- **Op Hoe** – peanut allergy case – Awaiting trial.
- **Op Essence** – Claudia LAWRENCE
- **Op Ram** – Complex blackmail



## ASB BY DISTRICT v PREVIOUS YEARS

NO OF ASB	2015/16	
HAMBLETON	1451	
CHANGE 15/16 v 14/15	-156	-9.7%
CHANGE 15/16 v 13/14	-250	-14.7%

NO OF ASB	2015/16	
RICHMONDSHIRE	890	
CHANGE 15/16 v 14/15	-14	-1.5%
CHANGE 15/16 v 13/14	-49	-5.2%

NO OF ASB	2015/16	
RYEDALE	720	
CHANGE 15/16 v 14/15	-66	-8.4%
CHANGE 15/16 v 13/14	-140	-16.3%

NO OF ASB	2015/16	
HARROGATE	3040	
CHANGE 15/16 v 14/15	-479	-13.6%
CHANGE 15/16 v 13/14	-242	-7.4%

NO OF ASB	2015/16	
SCARBOROUGH	4405	
CHANGE 15/16 v 14/15	-284	-6.1%
CHANGE 15/16 v 13/14	33	0.8%

NO OF ASB	2015/16	
CRAVEN	716	
CHANGE 15/16 v 14/15	-97	-11.9%
CHANGE 15/16 v 13/14	-251	-26.0%

NO OF ASB	2015/16	
YORK	6014	
CHANGE 15/16 v 14/15	-191	-3.1%
CHANGE 15/16 v 13/14	-254	-4.1%

- **ASB** is down on the previous year by 6%

• There is no link between the fall in ASB and the rise in Criminal Damage in respect of recording standards. A review by the Force Crime & Incident Registrar found no significant issues.

NO OF ASB	2015/16	
SELBY	1861	
CHANGE 15/16 v 14/15	28	1.5%
CHANGE 15/16 v 13/14	-6	-0.3%

## CASUALTIES KILLED OR SERIOUSLY INJURED FROM ROAD TRAFFIC COLLISIONS

		YTD	+/- Change		Rolling Qtr	
Key Performance Indicator		2015	on 2014	on 2013	Qtr	+/-
	<b>Killed or Seriously Injured casualties from RTCs:</b>	<b>307</b>	<b>-98 (-24%)</b>		<b>100</b>	<b>-71 (-42%)</b>
	<b>Motorcyclist KSI casualties from RTCs:</b>	<b>72</b>	<b>-18 (-20%)</b>		<b>27</b>	<b>-22 (-45%)</b>
	<b>Child (= &lt;16) KSI casualties from RTCs:</b>	<b>12</b>	<b>-9 (-43%)</b>		<b>5</b>	<b>-1 (-17%)</b>
	<b>Cyclist KSI casualties from RTCs:</b>	<b>47</b>	<b>-27 (-36%)</b>		<b>16</b>	<b>-16 (-50%)</b>

- Please note these are provisional data for the period 1<sup>st</sup> January to 30<sup>th</sup> September 15
- Long term the trend in KSIs is down.
- The provisional stats show a reduction on the previous years:
  - All KSI = 24 fatal and 283 serious against 36 fatal and 369 serious in same period in 2014.
  - Motorcycle = 8 fatal and 64 serious against 10 fatal and 80 serious in same period in 2014.
  - Pedal cyclist = 2 fatal and 45 serious against 3 fatal and 71 serious in same period in 2014.

# HR OVERVIEW

## Police Officers

	Apr 15	May 15	Jun 15	Jul 15	Aug 15	Sep 15	Oct 15	Nov 15	Dec 15	Jan 16	Feb 16	Mar 16	Apr 16
<b>Officer Budget FTE Target</b>	<b>1393.0</b>	<b>1393.0</b>	<b>1393.0</b>	<b>1393.0</b>	<b>1393.0</b>	<b>1393.0</b>	<b>1393.0</b>	<b>1393.0</b>	<b>1393.0</b>	<b>1393.0</b>	<b>1393.0</b>	<b>1393.0</b>	<b>1393.0</b>
Actual/ Projected Num inc recr'ment	1382.37	1387.02	1380.01	1374.27	1365.93	1360.21	1349.88						

The actual number of Officers has decreased in September 2015 by 10.33 FTE officers.

## Police Cadets

40 new Police Cadets started in York on 23 September 2015. Depending on the success of this pilot there may be potential to roll the scheme out across other force areas.

## PCSO

	Apr 15	May 15	Jun 15	Jul 15	Aug 15	Sep 15	Oct 15	Nov 15	Dec 15	Jan 16	Feb 16	Mar 16	Apr 16
<b>PCSO Budget FTE</b>	<b>183.0</b>	<b>183.0</b>	<b>183.0</b>	<b>183.0</b>	<b>183.0</b>	<b>183.0</b>	<b>183.0</b>	<b>183.0</b>	<b>183.0</b>	<b>183.0</b>	<b>183.0</b>	<b>183.0</b>	<b>183.0</b>
Actual/ Projected Num inc recr'ment	<b>197.98</b>	<b>197.52</b>	197.52	195.52	194.46	194.46	192.46						

PCSO numbers were over the allocated establishment previously due to the recruitment intake process. The actual number of PCSO's decreased by 2 FTE from the previous month, closer to the establishment level

Due to ORIGIN upgrade and system testing the Op Readiness data is not available this month.

NOT PROTECTIVELY MARKED

# HR OVERVIEW

## Specials

	Apr 15	May 15	Jun 15	Jul 15	Aug 15	Sep 15	Oct 15	Nov 15	Dec 15	Jan 16	Feb 16	Mar 16	Apr 16
<b>Specials Budget FTE</b>	<b>260.00</b>	<b>260.00</b>	<b>260.00</b>	<b>260.00</b>	<b>286.00</b>	<b>286.00</b>	<b>286.00</b>	<b>286.00</b>	<b>286.00</b>	<b>286.00</b>	<b>286.00</b>	<b>286.00</b>	<b>286.00</b>
Actual Specials FTE	185.00	177.00	172.00	171.00	170.00	189.00	183.00						

The actual number of Special Constables has decreased in September 2015 by 6.

The next in take of 28 Special Constables is scheduled for 28 November 2015.

## Staff

	Apr 15	May 15	Jun 15	Jul 15	Aug 15	Sep 15	Oct 15	Nov 15	Dec 15	Jan 16	Feb 16	Mar 16	Apr 16
<b>Staff Budget</b>	<b>1034.4</b>	<b>1035.2</b>	<b>1034.4</b>	<b>1028.4</b>	<b>1028.4</b>	<b>1027.4</b>	<b>1019.4</b>	<b>1018.4</b>	<b>1018.4</b>	<b>1018.4</b>	<b>1018.4</b>	<b>1017.4</b>	<b>1034.4</b>
Permanent Staff FTE	912.98	<b>913.93</b>	916.52	912.88	915.32	915.93	914.83						
Temporary Staff FTE (not including agency)	65.07	<b>69.62</b>	65.62	69.30	63.30	58.02	54.76						
Agency Staff FTE	33.50	<b>30.00</b>	28.22	31.74	36.74	35.32	38.24						
<b>Total Staff against budget FTE</b>	<b>1011.55</b>	<b>1013.55</b>	<b>1010.36</b>	<b>1013.92</b>	1015.36	1009.27	1007.83						

NOT PROTECTIVELY MARKED

# HR OVERVIEW

The Staff Budget has been adjusted for 2015/ 2016. Police staff roles fluctuate in accordance with organisational priorities and requirements. The approach to police staff workforce profiling is to explore opportunities where flexible resources can be utilised specifically to deliver key pieces of work.

The total number of actual Staff has decreased by 1.44 FTE from the previous month.

The number of agency staff has increased by 2.92 FTE since the previous month:  
 18 x agency staff are in supernumerary posts.  
 20.24 x agency staff are backfill or interim postings against established posts (includes part time agency staff).

The current number of Staff vacancies is 19.

## Volunteers

	Apr 15	May 15	Jun 15	Jul 15	Aug 15	Sep 15	Oct 15	Nov 15	Dec 15	Jan 16	Feb 16	Mar 16	Apr 16
Volun- teers	176.00	177.00	178.00	179.00	177.00	179.00	180.00						

Deployment of volunteers:-  
 The 180 volunteers are broken down into the following roles  
 1 Chief Officer – Citizens in Policing  
 1 - Head of Volunteering  
 1 - Deputy Head of Volunteering  
 6 - Volunteer Advisors'.  
 40 - Front Counter Support  
 131 - Volunteers are Safer Neighbourhood Support

It has been agreed that NYP will be running a recruitment campaigns for a number of volunteer vacancies. We are currently progressing the following volunteers roles:

- Community Safety Volunteer
- Call Quality Monitor Volunteers
- Survey Analyst Volunteers
- Driver Volunteers
- Vehicle Checkers

**Please note:**

That the above figures include Secondments Out of Force but exclude Career Break Staff.

# GLOSSARY

## READING THE PERFORMANCE DATA

- The numbers shows performance against the previous year
- The dashboard graphic for operational crime, ASB and KSI data is an assessment of the latest month against a normal month based on the 2014/15 reporting period. The position of the needle describes the month results relative to a linear average. This allows for factors such as seasonal trends or the impact of single one off events to be explained. As the desired direction of travel can be up or down (e.g. increasing crime is negative but an increasing resolution % positive) the graphics alternate the red/green colouring accordingly.

## GLOSSARY

- ASB = Anti-Social Behaviour
- Crimes Against Society = These are crimes which do not have a "named victim" i.e.. the offence is against The Crown. These are usually (but not always) are as the direct result of police intervention/proactivity e.g a drugs operation. In North Yorkshire & City of York approx 10% of crimes are "Against Society" therefore it is important to make the clear distinction from Victim Based Crime.
- Fraud Offences = These are not included in the crime statistics as they are not reported by forces to the Home Office. Instead these crimes are passed to Action Fraud and statistics are collated by that agency
- I Grade = priority assigned by control room for an incident requiring Immediate police response
- KSI = A casualty Killed or Seriously Injured as a result of a Road Traffic Collision on a public road
- MCU = Major Crime Unit
- MO = Modus Operandi
- OPL = Over Prescribed Limit typically the term used to describe failing a breath test
- P&CP = Police & Crime Plan document setting out the Police & Crime Commissioner's priorities
- PCC = Police & Crime Commissioner
- PCSO = Police Community Support Officer
- PSG = Performance Steering Group is an internal meeting chaired by a Chief Officer monitoring statistics & trends
- Resolved Outcome = A crime where an offender has been dealt with through sanction or restorative justice.
- Sanction Detection = A historical method of looking at how crimes were resolved. A sanction detection includes where an offender is Charged, Cautioned, given a Penalty Notices for Disorder or Cannabis Warning or Fixed Penalty Notices, and where an offender has crimes Taken Into Consideration (TIC - see below).
- TIC = Taken Into Consideration is typically where an offender admits to further offences to avoid potentially being pursued for these at a later date.
- TTCG = Tactical Tasking & Co-ordination Group is an internal meeting which directs resources to tackle specific problems

NOT PROTECTIVELY MARKED