

Carolyn

One of the
RSM team



**Board cyber awareness
training**

The threat of cyber attacks

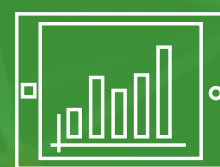


An ever-evolving threat

The cyber threat and regulatory landscape is **always changing and growing**, coupled with businesses needing to **respond to client demand**, makes cyber a **complex issue** to tackle.

A rise in sophistication and frequency

Cybercriminals are becoming **increasingly sophisticated** in their methods and launching attacks **more often** to **steal data** and target systems to **disrupt business processes and operations**.

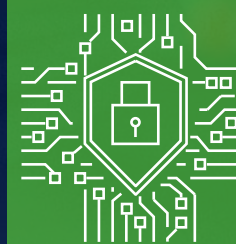


A severe global risk

The threat has become so great that the World Economic Forum have ranked **cyber insecurity** as the **fourth** most severe risk over the next 2-year period and **eighth** over the next 10 years.

What can your business do?

To manage this threat, Boards must have an **awareness of cyber risk**, be able to **challenge management's plans**, and **set the tone of expectation** for investment in cyber to protect businesses.



How RSM can support your cyber awareness

- The accountability for effective cyber security resides with the Board and robust cyber security starts with good awareness. In our experience, far too many Boards have not undertaken effective cyber awareness training.
- We work with Boards to build their understanding of the cyber challenge through the lens of the business they are responsible for.
- The insights we share are based on real-world cyber events, our sector experience, and deep-rooted knowledge of regulations. Furthermore, we bring this to life through a practical exercise to test knowledge and promote leadership challenge and debate.

Our approach to cyber awareness training supports you in:



Gaining knowledge

Creation of tailored content including:

- The current threat landscape affecting your business
- Insights of what we've seen in your sector
- Unpacking actual cyber-attacks to generate learnings and insights



Understanding expectations

Provide clarity of regulatory expectations and drivers for cyber security including:

- Relevant regulations
- Level of cyber control expectations
- Cyber considerations for the Board



Gaining practical awareness

Experience a high-level test of your response capability with a walkthrough of how a cyber-attack would unfold:

- A taste of a cyber-attack using a real-world attack scenario.

“Organisations (including both business and cyber leaders) must continue to invest in and maintain an awareness of essential security fundamentals.”

World Economic Forum Global Cybersecurity Outlook 2024

“The Board is responsible for ensuring that risks to delivering the strategy are identified, evaluated, and mitigated in line with the business risk appetite.”

UK National Cyber Security Centre (NCSC)

For further information contact:



Stuart Leach
Partner,
Technology & Cyber Risk
Assurance
stuart.leach@rsmuk.com



Sheila Pancholi
Partner
Technology & Cyber Risk
Assurance
sheila.pancholi@rsmuk.com



Richard Curtis
Director,
Technology & Cyber Risk
Assurance
richard.curtis@rsmuk.com



The UK group of companies and LLPs trading as RSM is a member of the RSM network. RSM is the trading name used by the members of the RSM network. Each member of the RSM network is an independent accounting and consulting firm each of which practises in its own right. The RSM network is not itself a separate legal entity of any description in any jurisdiction.

The RSM network is administered by RSM International Limited, a company registered in England and Wales (company number 4040598) whose registered office is at 50 Cannon Street, London EC4N 6JJ. The brand and trademark RSM and other intellectual property rights used by members of the network are owned by RSM International Association, an association governed by article 60 et seq of the Civil Code of Switzerland whose seat is in Zug.

RSM UK Corporate Finance LLP, RSM UK Legal LLP, RSM UK Restructuring Advisory LLP, RSM UK Risk Assurance Services LLP, RSM UK Tax and Advisory Services LLP, RSM UK Audit LLP, RSM UK Consulting LLP and RSM UK Creditor Solutions LLP are limited liability partnerships registered in England and Wales, with registered numbers OC325347, OC402439, OC325349, OC389499, OC325348, OC325350, OC397475 and OC390886 respectively. RSM UK Employer Services Limited, RSM UK Tax and Accounting Limited and RSM UK Management Limited are registered in England and Wales with numbers 6463594, 6677561 and 3077999 respectively. RSM Northern Ireland (UK) Limited is registered in Northern Ireland at Number One Lanyon Quay, Belfast, BT1 3LG with number NI642821. All other limited companies and limited liability partnerships are registered at 6th Floor, 25 Farringdon Street, London, EC4A 4AB. The UK group of companies and LLPs trading as RSM is a member of the RSM network. RSM is the trading name used by the members of the RSM network. Each member of the RSM network is an independent accounting and consulting firm which practises in its own right. The RSM network is not itself a separate legal entity in any jurisdiction.