



North Yorkshire Police Rural and Wildlife crime.

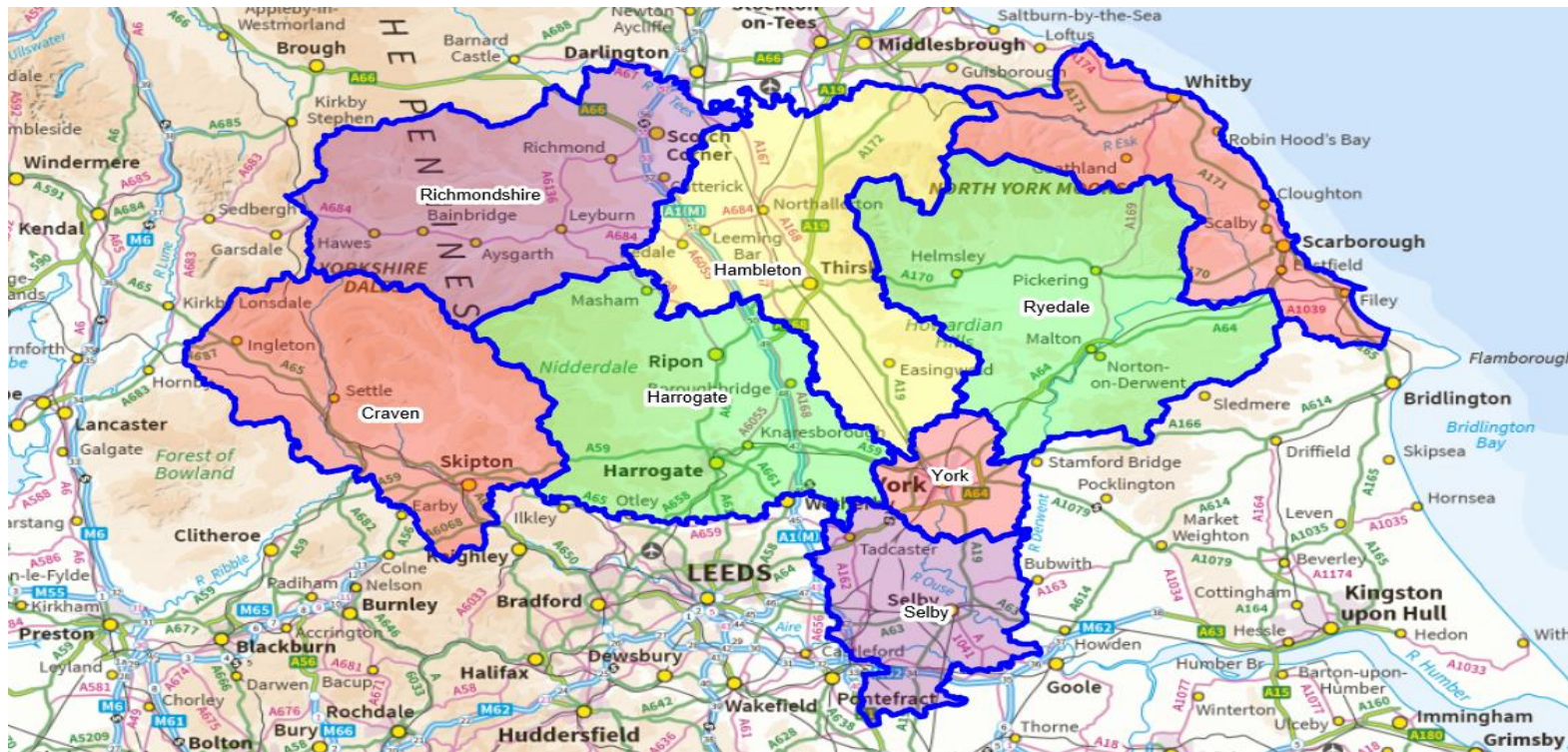




Rural Crime

Offences that relate to farms, agriculture, wildlife, the environment and heritage sites where they are targeted due to their isolation of the rural location.

North Yorkshires biggest challenge is always geographical. The size and rural nature of the county. It also shares its borders with large urban cities which make it ideally placed for cross border criminals to target valuable assets made vulnerable by their locations.



Rural Task Force Relaunch



- An internal analysis was conducted in late 2020. Feedback included the RTF function was not well understood on different Commands areas..
- Several issues were found for example shift patterns were not aligned properly, a lack of understand from FCR in respect to RTF function and NYP not fully understanding the impact of rural crime.
- The relaunch centred around 5 key areas to give the RTF a tactical advisor model gave clear focus and identity to the team and better clarity to the Force. A service plan was drawn up:-

01

Respond effectively to
Op Figaro & poaching
investigations

02

Provide support and
coordination with
targeting high harm
offenders of rural and
wildlife crime

03

Work cohesively with
cross Border force areas
enhancing partnership
working opportunities
and joint initiatives

04

Develop intelligence
through community
networks and public
engagement

05

Provide tactical advice
to Command staff and
colleagues with rural
crime investigations and
workloads

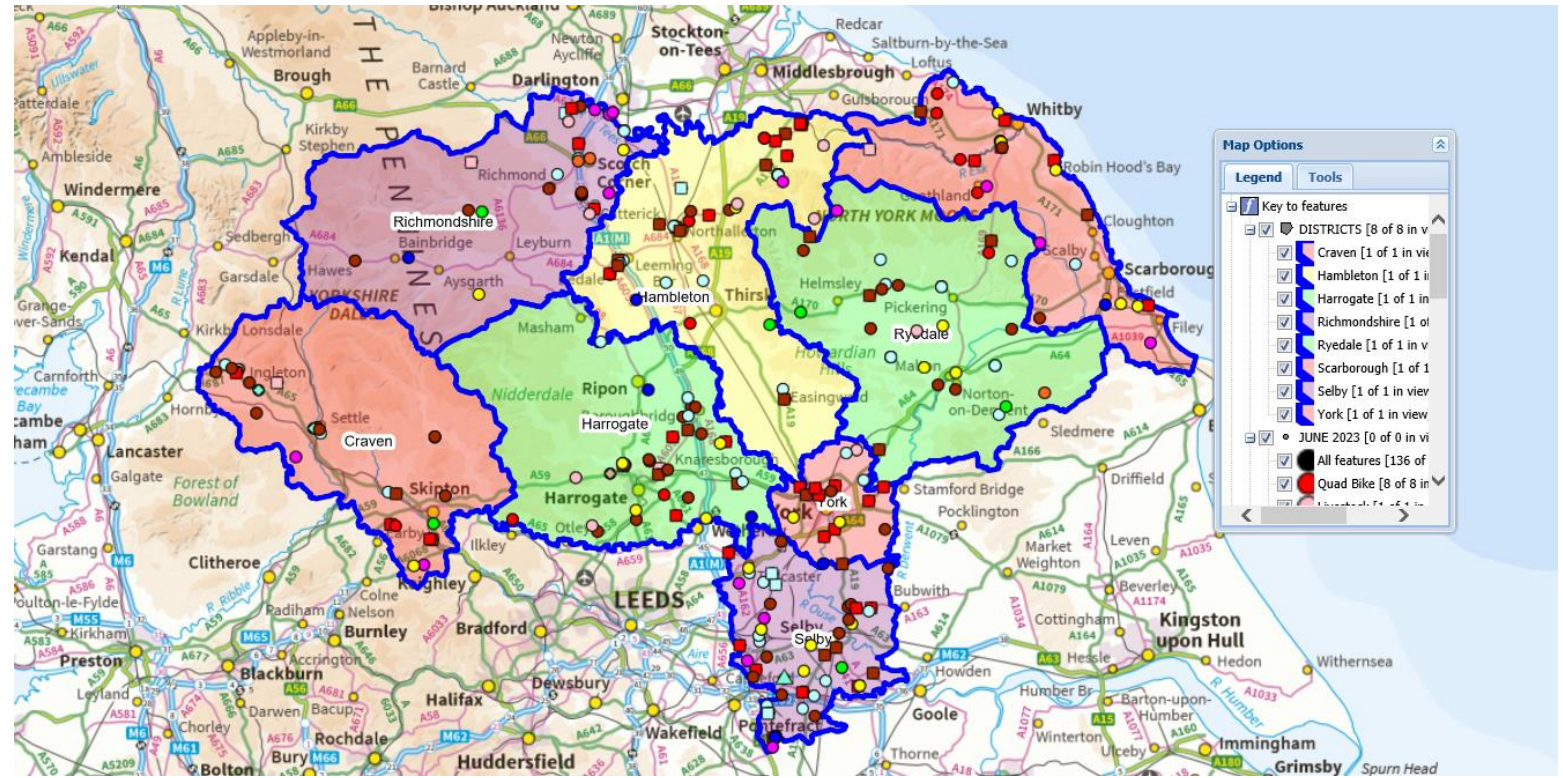


Rural Task Force Relaunch

Through the new way of working Rural crime information gathered and recorded by RTF.

Bespoke rural crime figures and trends identified through RTF running logs.

Interactive rural crime map created for Hot Spot crime areas and live time deployment of Sec Ops resources to these rural crime hot spots.





National Collaboration centres around key areas of Rural and Wildlife crime





Operation Figaro and 9 Force Approach

Op Figaro

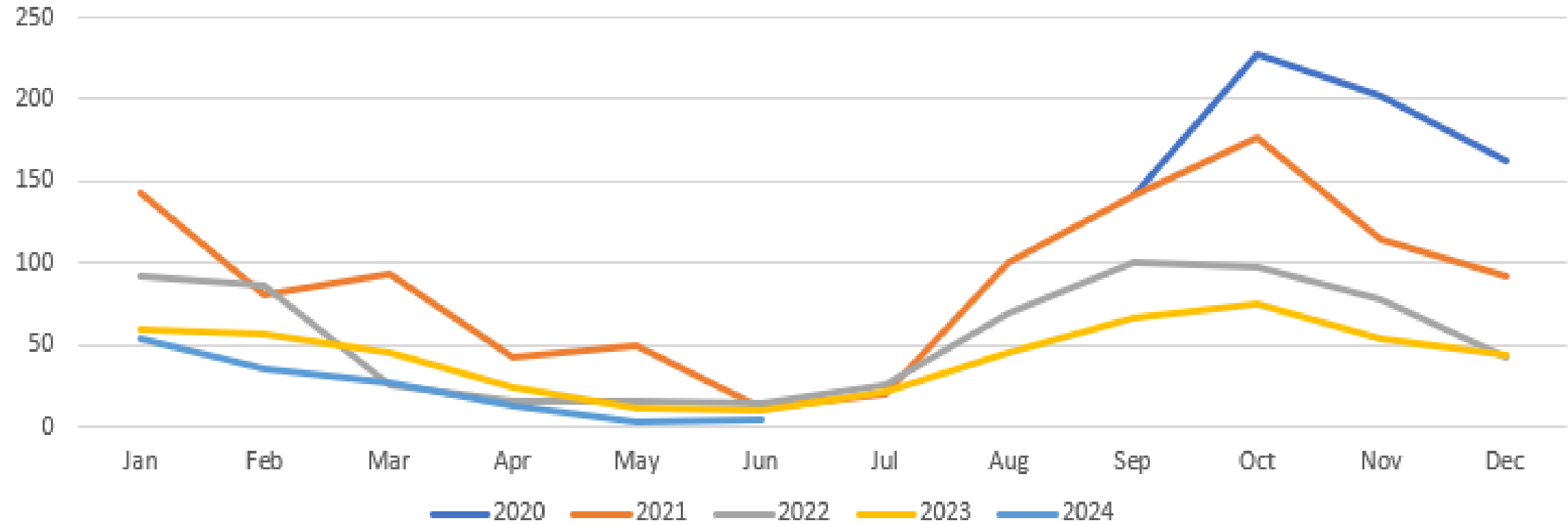
- At the relaunch poaching was second only to theft as the most reported crime in North Yorkshire.
- Op Figaro is the NYP response to Poaching offences. This is now a national strategy under Operation Galileo.
- Better understanding by NYP of the impacts of poaching offences on rural communities, due to feelings of isolation to all crime types.
- Strong partnership working, with internal partners and communities. .e.g. WhatsApp groups, target hardening, safer streets work.
- This has resulted in a reduction of 61% since the start of the Figaro process

SEASON STATS JULY TO JUNE	TOTALS	% YR RISE/FALL	FALL FROM 20/21
2020/21	1155		
2021/22	891	-23%	
2022/23	622	-27%	-46%
2023/24	443	-28%	-61%

Operation Figaro Results by Year



Monthly Poaching Figures



Operation Walrus – Theft of agricultural GPS devices



- Identified as a national threat to food production.
- Target hardening through work with partners NFU, auctions, agricultural dealerships re-visits
- Problem solving plan created and owned by RTF.
- Use problem profile and crime mapping to target police patrols as effectively as possible
- Increased intelligence picture and partnership working with National agencies identified suspects and vehicles. This has led to more rapid interventions reducing the number of offences and victims of crime.



Operation Walrus – Theft of agricultural GPS devices



NYP have been involved in –

- The identification and arrest offenders with the recovery of 48 GPS units. Worth near 300,000 pounds.
- Arrest, charge and remand of a further 3 offenders in relation to a wider conspiracy to commit theft offences across northern England.
- Working the national agencies have identify a crime group operating in multiple force areas including North Y. Yorkshire. This allowed bespoke target hardening.

Operation Spotlight



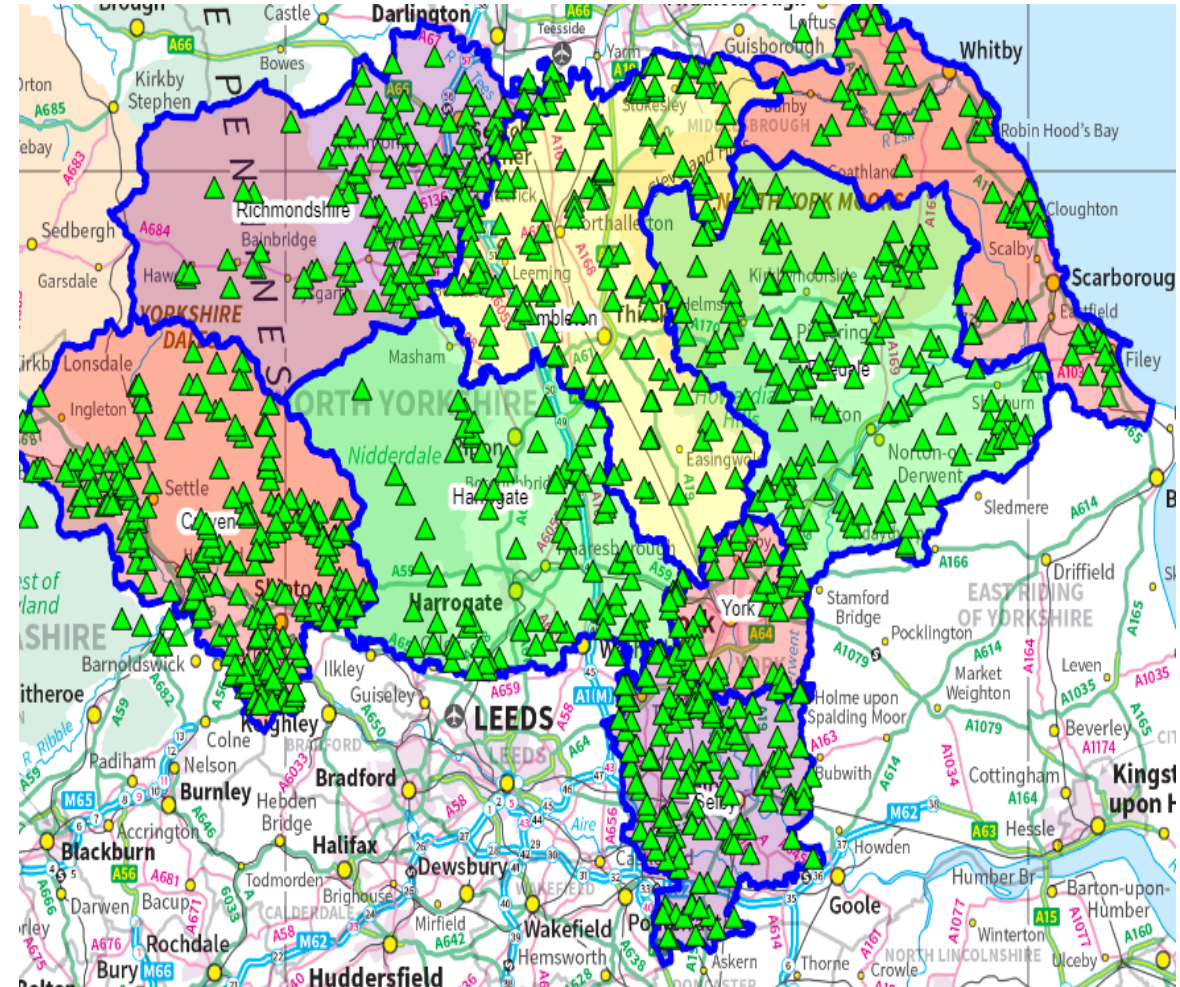
- NYP's response to quad bike thefts
- NYP suffers from cross border criminals travelling into our force area and stealing farm quads.
- A partnership approach with the emphasise on target hardening, through farm visits community engagement and initiatives such as safer streets.
- Identifying and targeting high harm offenders and the recovery stolen property.
- Using the TAC AD model proactively to give guidance and assistance to obtain best evidence for all quad related crime and assist with the location and arrests of suspects.
- Theft of Quad bikes continues to be a challenge to communities and police.
- Ongoing delays with the at Parliament level Equipment Theft Prevention Bill continues to frustrate.



Target Hardening- property marking



- **Safer streets**
- Ongoing Government initiative to high impact crime.
- Rural task force used funding for property marking kits.
- This has seen 1500 farms visited and 8000 kits given to previous victims of crime.
- It has also given an opportunity to give safety and welfare advice to rural communities in the way of home visits and leaflets offering support and guidance into a wide range of things including, debt relief, suicide prevention, farming support and domestic violence as well as crime safety and fire safety advice.
- The schematic shows a snapshot of how the work was progressing and mapped.



Operation Checkpoint/ Hawkeye – Cross border work



Operation Hawkeye –Share intelligence and information in relation to cross border criminals with 6 other border forces. This is used to support pro-active policing operations and investigations.

This working method has proved successful and continues to build a better closer working relationship.



Wildlife Crime



Bird of prey persecution



- A new approach to Bird Of Prey persecution has been tried alongside the NWCU, and partners and other interested parties. We are working extremely hard to build a relationship to try and tackle bird of prey persecution.
- This season following the engagement and visits we have seen a significant reduction in reported incidents.
- It is also important to give proportionate response to wildlife crime while supporting rural communities and businesses.



Hunting with hounds



- The Hunting Act 2004 prohibits all hunting of wild mammals with dogs, except where it is carried out in accordance with the conditions of an exemption..
- It is important that the Police maintain their impartiality and take proportionate action where evidence exists of offences being committed.
- North Yorkshire has organisational learning around fox hunting over the last few years and implemented best practice in accordance with general crime investigations.
- Rural task force maintain an advisor role to support such investigations with appropriate reviews to ensure standards are met.



Operation Recall - Livestock worrying



Operation Recall was born in 2023, with national animal welfare charities, including, Naturewatch Foundation and the RSPCA, joining forces with the National Rural Crime Unit (NRCU) and police forces to launch the strategic project to tackle the issue across the country.

Since Covid lockdown there has been a rise in dog attacks on farm animals.

Op Recall is to:-

- Increase education and awareness of dog owners/walkers to prevent dog attacks to farm animals.
- To ASB legislation to issue community protection warnings and community protection notices
- Overall aim is to reduce attacks on livestock.



New technology



This is playing a vital role in our fight against rural and wildlife crime.

The team has drone capability and night vision which have both been used successfully in both types of crime.

We will deploy in rural and urban areas to assist in the search for missing persons and gain support from rural networks to assist.

Detection dogs are an available resource to the team and will assist on wildlife crime and rural crime.

DNA marking kits and training to officers, to identify stolen property and to return it to victims of crime promptly.

