



Rural Crime and hidden harms

North Yorkshire Police's Approach and Progress



The scale of North Yorkshire



Local strategy



Our Plan on a Page 2024 - 2029



Why we exist To provide an outstanding service to the people of York and North Yorkshire to keep them safe, and feeling safe.

What we do

- Prevent and reduce crime and antisocial behaviour.
- Effectively respond to, investigate and solve crimes, and manage offenders.
- Safeguard the vulnerable and support victims of crime.

What we have to be good at:

<p>Focus on prevention</p> <p>We focus on prevention and early intervention through evidence-based problem solving.</p>	<p>Community engagement</p> <p>We have a strong presence in neighbourhoods and communities, understand and are responsive to their needs, and build public trust and confidence.</p>	<p>Investigative standards</p> <p>We deliver the highest investigative standards, build quality case files and provide the best victim care.</p>
<p>Improve processes</p> <p>We work as one team across our force to improve our internal processes and reduce bureaucracy and inefficiency.</p>	<p>Professional & ethical standards</p> <p>We operate with the highest level of professional and ethical standards.</p>	<p>Partnerships</p> <p>We work effectively with our partners and have focussed collaboration frameworks and governance in place.</p>
<p>Use of data</p> <p>We collect and develop accurate data and use it to understand demand and performance to make evidence-based decisions.</p>	<p>Finance management and business planning</p> <p>We use sound business judgement and effective financial management to provide the best value for money for our communities.</p>	<p>Innovation</p> <p>We create a culture of innovation in which we support our people to seek better ways of working and apply their innovative ideas.</p>

What we have to invest in:

<p>Training</p> <p>Training and development to equip our people with the leadership and practical operational skills they need.</p>	<p>Technology</p> <p>Delivering effective mobile policing, digitally enabled operations, and efficient systems and processes.</p>	<p>Estate</p> <p>Modernising and maintaining our estate, working environment and assets.</p>	<p>Support Services</p> <p>Proactive, responsive support services that are strategically aligned.</p>
--	--	---	--

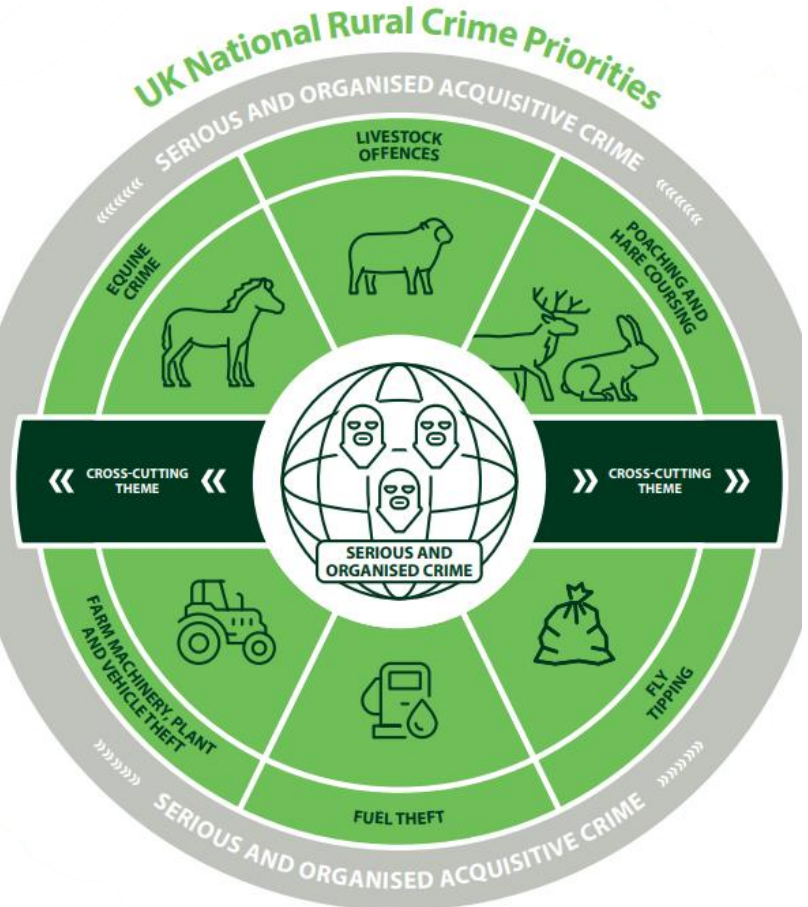
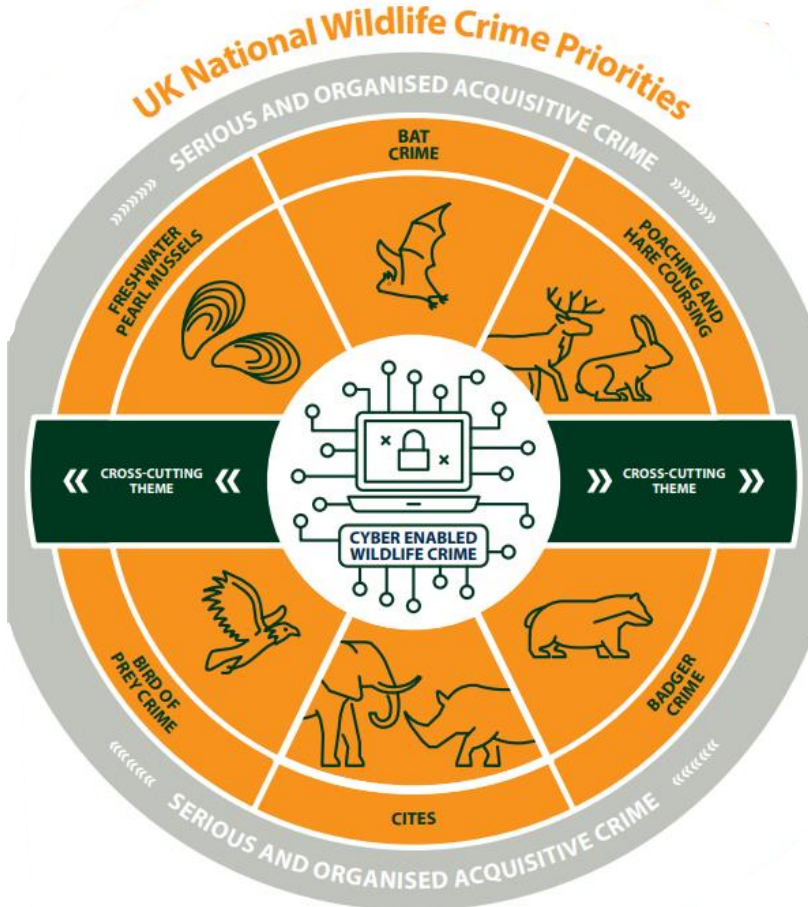
Our foundation, our people:
Through our leadership we make North Yorkshire Police a brilliant place to work

People are proud to work here, and we attract, recruit and retain the best.	We are anti-discriminatory, inclusive and representative of our communities.	We make sure our people feel valued, support their wellbeing, and help them to build resilience.
---	--	--

Control Strategy 2024

Neighbourhood Crime	Vulnerability and Abuse	Serious and Organised Crime
<ul style="list-style-type: none"> Road Safety Fraud Residential Burglary – City & County Rural Crime – identified hotspot Wards 	<ul style="list-style-type: none"> Domestic abuse Child Sexual Abuse & Exploitation (CSAE) Modern Slavery & Human Trafficking (MHT)/ Organised Immigration Crime Rape and serious sexual assaults Stalking 	<ul style="list-style-type: none"> Drug trafficking & Drug Deaths County Lines West Balkan Criminality Serious Violence / Assaults on emergency workers
<p>Strategic Lead: Chief Supt, Head of Local Policing</p>	<p>Strategic Lead: Chief Supt, Head of Safeguarding</p>	<p>Strategic Lead: Chief Supt, Head of Protective Services</p>

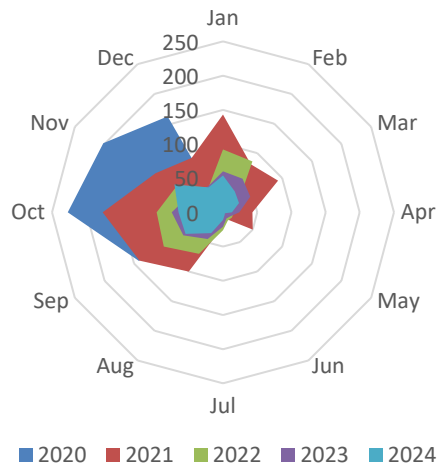
National cooperation and strategy



Current Status of Rural Crime



Monthly Poaching Figures to Dec 24



Progress on tackling Wildlife and Rural Crime



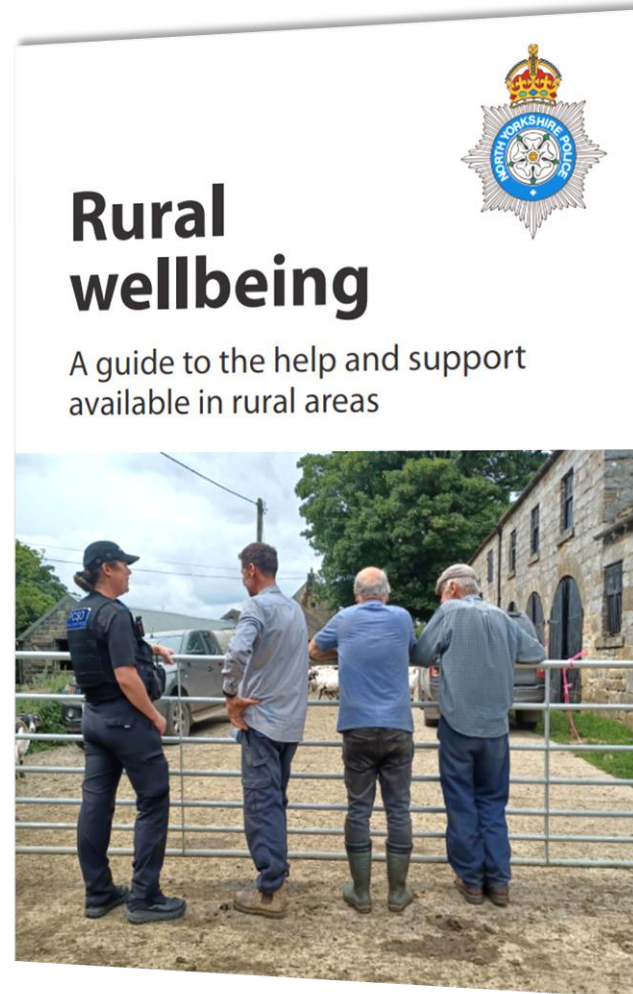
Poaching

- Better understanding by NYP of the impacts of poaching offences on rural communities, due to feelings of isolation to all crime types.
- Strong partnership working, with internal partners and communities. .e.g. WhatsApp groups, target hardening, safer streets work.
- Stronger national and regional partnerships utilising ASB legislation to target offenders.

Acquisitive crime

- Use of dedicated Teams channels to work with partners cross border to great success, targeting high harm offenders.
- Operation Hawkeye – Sharing intelligence and information in relation to cross border criminals with 6 other border forces.
- Delivering proactive intelligence led policing operations and investigations which cross borders.

Domestic Abuse in Rural Areas



Future and measuring success



- Looking towards 10 years of North Yorkshire Polices commitment to rural communities through the RTF
- Working to provide a blueprint for national data recording of crime and incidents affecting rural communities
- Ensuring staffing within the RTF
- Improving our performance in recording and sharing intelligence
- Improving accessibility for rural communities to report to us
- Development of our next delivery plan

Discover more and report online



🏠 Advice and information

Rural crime is an issue for large areas of the country but it tends to go unreported. It can impact on insurance premiums, food prices and damage local communities. Find out what rural crime is and what can be done to prevent it.

[What is rural crime?](#)

[Rural crime prevention](#)

[Heavy machinery theft prevention](#)

[Report a rural crime](#)

Wildlife crime

[What is wildlife crime?](#)

[What you can do about wildlife crime](#)

[Report a wildlife crime](#)